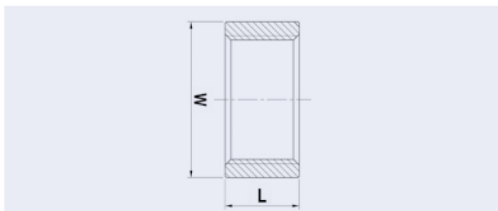


## Muffe Coupling

hergestellt aus nahtlosem Rohr / made from seamless tubes  
DIN 2986 bzw. / or. DIN EN 10241:2000  
Material 1.4571

**333**

Rohranschlussmaß		Gewicht				
Nominal Pipe Size		Weight				
(NPS)	W	L	kg	Artikelnummer	Norm	
				Item No.		
1/8"	14,0	17,0	0,012	333018DINT	DIN	○
1/8"	15,0	17,0	0,012	333018T	EN	■
1/4"	17,2	25,0	0,020	333014DINT	DIN <sup>**</sup>	○
1/4"	18,5	25,0	0,020	333014T	EN	■
3/8"	21,3	26,0	0,030	333038T	EN	■
1/2"	26,4	34,0	0,060	333012DINT	DIN	■
1/2"	26,6	34,0	0,060	333012T	EN	■
3/4"	31,8	36,0	0,080	333034T	EN	■
1"	39,5	43,0	0,140	333100T	EN	■
1 1/4"	48,3	48,0	0,190	333114T	EN	■
1 1/2"	54,5	48,0	0,240	333112T	EN	■
2"	66,2	56,0	0,340	333200T	EN	■
2 1/2"	82,0	65,0	0,530	333212T	EN	■
3"	95,0	71,0	0,610	333300T	EN	■
4"	121,4	83,0	1,180	333400T	EN	■



## Halbe Muffe Half coupling

hergestellt aus nahtlosem Rohr / made from seamless tubes  
DIN 2986 bzw. / or. DIN EN 10241:2000  
Material 1.4571

**334**

Rohranschlussmaß		Gewicht				
Nominal Pipe Size		Weight				
(NPS)	W	L	kg	Artikelnummer	Norm	
				Item No.		
1/8"	14,0	8,0	0,010	334018DINT	DIN	■
1/8"	15,0	8,0	0,010	334018T	EN	■
1/4"	17,2	11,0	0,020	334014DINT	DIN <sup>**</sup>	■
1/4"	18,5	11,0	0,020	334014T	EN	■
3/8"	21,3	12,0	0,020	334038T	EN	■
1/2"	26,4	15,0	0,030	334012DINT	DIN	■
1/2"	26,6	15,0	0,030	334012T	EN	■
3/4"	31,8	17,0	0,040	334034T	EN	■
1"	39,5	20,0	0,060	334100T	EN	■
1 1/4"	48,3	22,0	0,090	334114T	EN	■
1 1/2"	54,5	22,0	0,120	334112T	EN	■
2"	66,2	26,0	0,170	334200T	EN <sup>**2</sup>	■
2 1/2"	82,0	30,0	0,210	334212T	EN <sup>**2</sup>	■
3"	95,0	34,0	0,290	334300T	EN <sup>**2</sup>	■
4"	121,4	40,0	0,940	334400T	EN <sup>**2</sup>	■

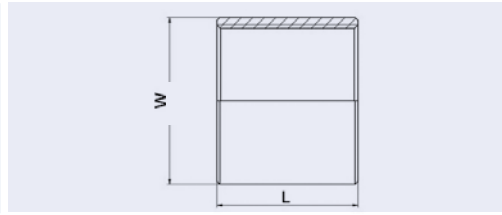
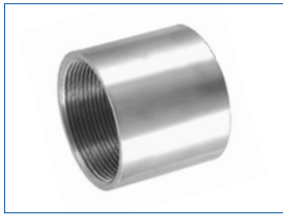
Alle Maße in mm / All sizes in mm

Technische Änderungen vorbehalten / Technical changes reserved

<sup>\*\*</sup> Ähnlich DIN / Analog to DIN

<sup>\*\*2</sup> Ähnlich EN 10241:2000 / Analog to EN 10241:2000

■ Standard-Lagerartikel / warehouse stock ○ Auftragsbezogene Fertigung / order related production

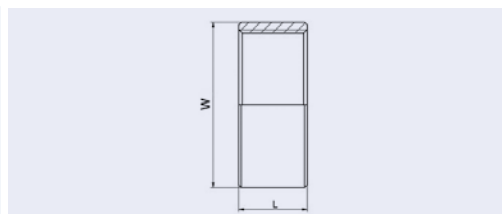


## Muffe Coupling

hergestellt aus nahtlosem Rohr / made from seamless tubes  
ähnlich / analog to DIN EN 10241:2000  
Material 1.4307 (AISI 304L) V2A

**33307**

Rohranschlussmaß		Gewicht			
Nominal Pipe Size		Weight			
(NPS)	W	L	kg	Artikelnummer	
				Item No.	
1/8"	15,2	17,0	0,0150	33307018T	■
1/4"	18,2	25,0	0,0280	33307014T	■
3/8"	21,3	26,0	0,0330	33307038T	■
1/2"	25,2	34,0	0,0500	33307012T	■
3/4"	30,5	36,0	0,0660	33307034T	■
1"	37,2	43,0	0,1000	33307100T	■
1 1/4"	46,7	48,0	0,1570	33307114T	■
1 1/2"	52,8	48,0	0,1850	33307112T	■
2"	65,5	56,0	0,3160	33307200T	■
2 1/2"	81,9	65,0	0,5020	33307212T	○
3"	95,4	71,0	0,6280	33307300T	○
4"	122,4	83,0	1,2440	33307400T	○

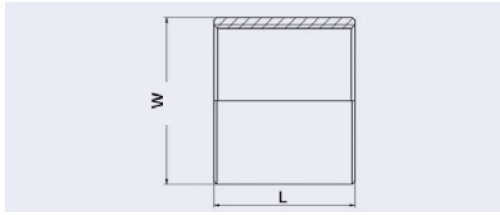
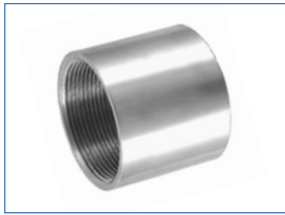


## Halbe Muffe Half coupling

hergestellt aus nahtlosem Rohr / made from seamless tubes  
ähnlich / analog to DIN EN 10241:2000  
Material 1.4307 (AISI 304L) V2A

**33407**

Rohranschlussmaß		Gewicht			
Nominal Pipe Size		Weight			
(NPS)	W	L	kg	Artikelnummer	
				Item No.	
1/8"	15,2	8,0	0,0076	33407018T	○
1/4"	18,2	11,0	0,0116	33407014T	○
3/8"	21,3	12,5	0,0151	33407038T	○
1/2"	25,2	16,0	0,0238	33407012T	■
3/4"	30,5	17,2	0,0314	33407034T	■
1"	37,2	19,5	0,0432	33407100T	■
1 1/4"	46,7	21,5	0,0670	33407114T	■
1 1/2"	52,8	21,5	0,0798	33407112T	■
2"	65,5	26,0	0,1370	33407200T	■
2 1/2"	81,9	30,5	0,2373	33407212T	○
3"	95,4	35,5	0,3410	33407300T	○
4"	122,4	41,5	0,6120	33407400T	○



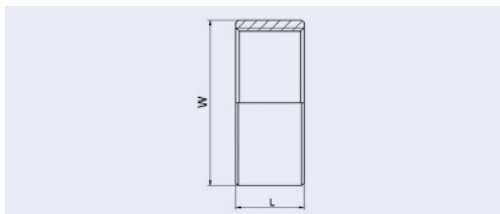
## Muffe Coupling

hergestellt aus nahtlosem Rohr / made from seamless tubes  
ähnlich / analog to DIN EN 10241:2000  
Material 1.4404 (AISI 316L) V4A

**33304**

Rohranschlussmaß	Gewicht
Nominal Pipe Size	Weight

(NPS)	W	L	kg	Artikelnummer	
				Item No.	
1/8"	15,2	17,0	0,0150	33304018T	■
1/4"	18,2	25,0	0,0280	33304014T	■
3/8"	21,3	26,0	0,0330	33304038T	■
1/2"	25,2	34,0	0,0500	33304012T	■
3/4"	30,5	36,0	0,0660	33304034T	■
1"	37,2	43,0	0,1000	33304100T	■
1 1/4"	46,7	48,0	0,1570	33304114T	■
1 1/2"	52,8	48,0	0,1850	33304112T	■
2"	65,5	56,0	0,3160	33304200T	■
2 1/2"	81,9	65,0	0,5020	33304212T	■
3"	95,4	71,0	0,6280	33304300T	■
4"	122,4	83,0	1,2440	33304400T	■



## Halbe Muffe Half coupling

hergestellt aus nahtlosem Rohr / made from seamless tubes  
ähnlich / analog to DIN EN 10241:2000  
Material 1.4404 (AISI 316L) V4A

**33404**

Rohranschlussmaß	Gewicht
Nominal Pipe Size	Weight

(NPS)	W	L	kg	Artikelnummer	
				Item No.	
1/8"	15,2	8,0	0,0076	33404018T	■
1/4"	18,2	11,0	0,0116	33404014T	■
3/8"	21,3	12,5	0,0151	33404038T	■
1/2"	25,2	16,0	0,0238	33404012T	■
3/4"	30,5	17,2	0,0314	33404034T	■
1"	37,2	19,5	0,0432	33404100T	■
1 1/4"	46,7	21,5	0,0670	33404114T	■
1 1/2"	52,8	21,5	0,0798	33404112T	■
2"	65,5	26,0	0,1370	33404200T	■
2 1/2"	81,9	30,5	0,2373	33404212T	■
3"	95,4	35,5	0,3410	33404300T	■
4"	122,4	41,5	0,6120	33404400T	■