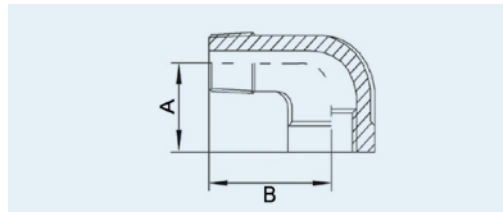


**Winkel 45°**  
**Elbow 45°**

**Innen-/Außengewinde / male-/female thread**  
**Material 1.4408 (AISI 316) V4A**

**303 A**

Rohranschlussmaß			Gewicht		
Nominal Pipe Size			Weight		
(NPS)	A	B	kg	Artikelnummer	
				Item No.	
1/4"	28,0	16,0	0,0300	303A014T	■
3/8"	30,0	18,0	0,0450	303A038T	■
1/2"	32,0	20,0	0,0600	303A012T	■
3/4"	37,0	23,0	0,0850	303A034T	■
1"	43,0	27,0	0,1365	303A100T	■
1 1/4"	50,0	30,0	0,2020	303A114T	■
1 1/2"	57,0	33,0	0,3380	303A112T	■
2"	65,0	42,0	0,5760	303A200T	■



**Winkel 90°**  
**Elbow 90°**

**Innen-/Außengewinde / male-/female thread**  
**Material 1.4408 (AISI 316) V4A**

**304**

Rohranschlussmaß			Gewicht		
Nominal Pipe Size			Weight		
(NPS)	A	B	kg	Artikelnummer	
				Item No.	
1/8"	16,0	24,0	0,0170	304018T	■
1/4"	19,0	28,5	0,0296	304014T	■
3/8"	20,0	32,0	0,0448	304038T	■
1/2"	22,0	35,5	0,6072	304012T	■
3/4"	27,5	41,0	0,0913	304034T	■
1"	30,5	47,5	0,1467	304100T	■
1 1/4"	37,9	55,0	0,2490	304114T	■
1 1/2"	41,0	59,0	0,2970	304112T	■
2"	51,5	73,0	0,5530	304200T	■
2 1/2"	63,0	87,0	0,9790	304212T	■
3"	74,0	102,0	1,4220	304300T	■
4"	97,0	122,0	2,7500	304400T	■

Alle Maße in mm / All sizes in mm  
Technische Änderungen vorbehalten / Technical changes reserved

■ Standard-Lagerartikel / warehouse stock    ○ Auftragsbezogene Fertigung / order related production